

Magnetic Concepts Corp.

Since 1989

© Magnetic Concepts Corp., 2007

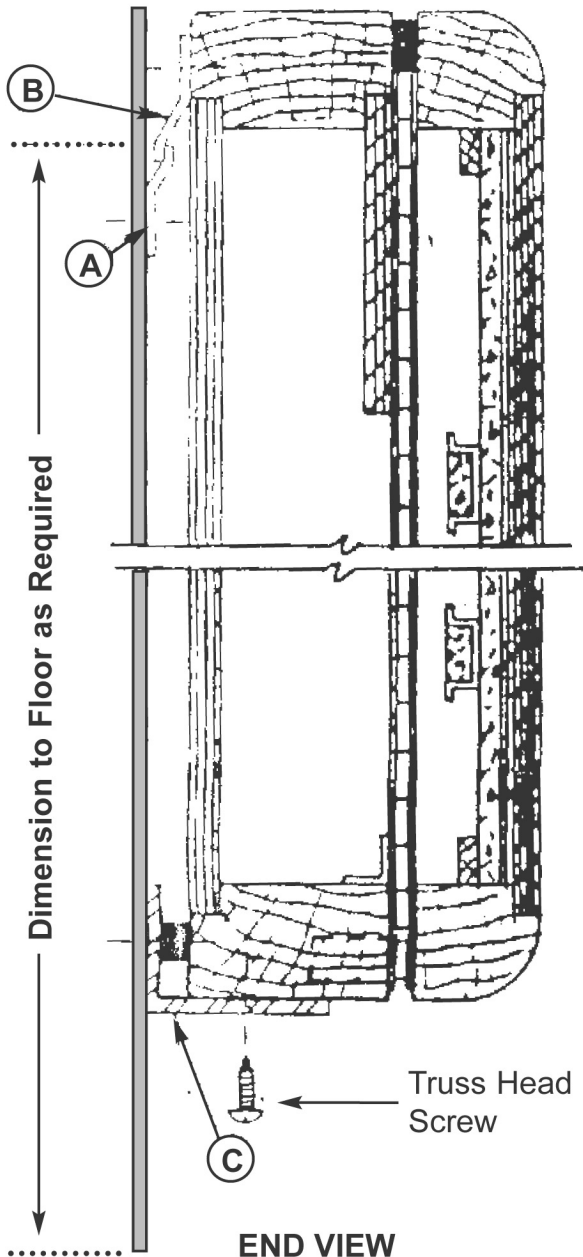
Magnetic Whiteboards

Rol-a-charts®

Electronic Print Boards

Magnetic Accessories

Wood Cabinet Whiteboard Mounting Instructions



1. Chalk a horizontal line on wall parallel to floor at desired mounting height of wall mounting bar (A). Measure from top of this bar to the floor.
2. Drill holes through lower portion of mounting bar (A) of correct diameter according to wall construction and mount with screws (included) and use Rawl plugs (as required).
3. Lift cabinet above mounting bar (A) and hold it flat against the wall, then let slide down until continuous mounting bar (B) on back of cabinet is resting on wall mounting bar (A). Let bottom of cabinet rest against wall with rubber bumpers.
4. With cabinet in place, place bottom retaining angle clip (C) tightly to wall and sill of cabinet with finger pressure at center of cabinet, then mark a pencil line on the wall at bottom of angle clip. Remove cabinet from the wall and install angle clip (C) to wall using a 1" truss head screw through the angle clip into wall.
5. Replace cabinet on top mounting bar (A) with bottom resting on angle clip (C) and secure sill of cabinet to angle clip with a 1/2" truss head screw.
6. For the adjustable door catches (top and bottom), the screws in each end may be tightened or loosened to change desired tension.

NOTE: 1" truss head screw is provided for attaching angle clip to wall. If your wall construction requires a different fastener, you are responsible for furnishing the appropriate hardware.

Questions? Call 800-334-4245 for assistance.

Additional Supplies Part Numbers:

Whiteboard Accessory Kit
90437

Dry-Erase Markers
90431 (4 wide tip)

Sketch Pads
90480 (4/pkg)

Door Lock
90449

611 3rd Avenue SW Carmel, IN 46032 (800) 334-4245 (317) 580-4020
web www.bigboards.com email sales@magneticconcepts.com fax (317) 580-4024