

Magnetic Concepts Corp.

Since 1989

© Magnetic Concepts Corp., 2007

Magnetic Whiteboards

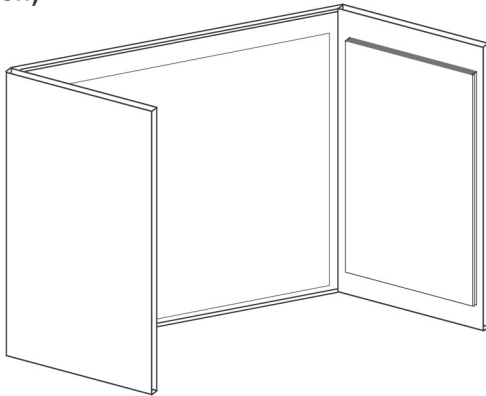
Rol-a-charts®

Electronic Print Boards

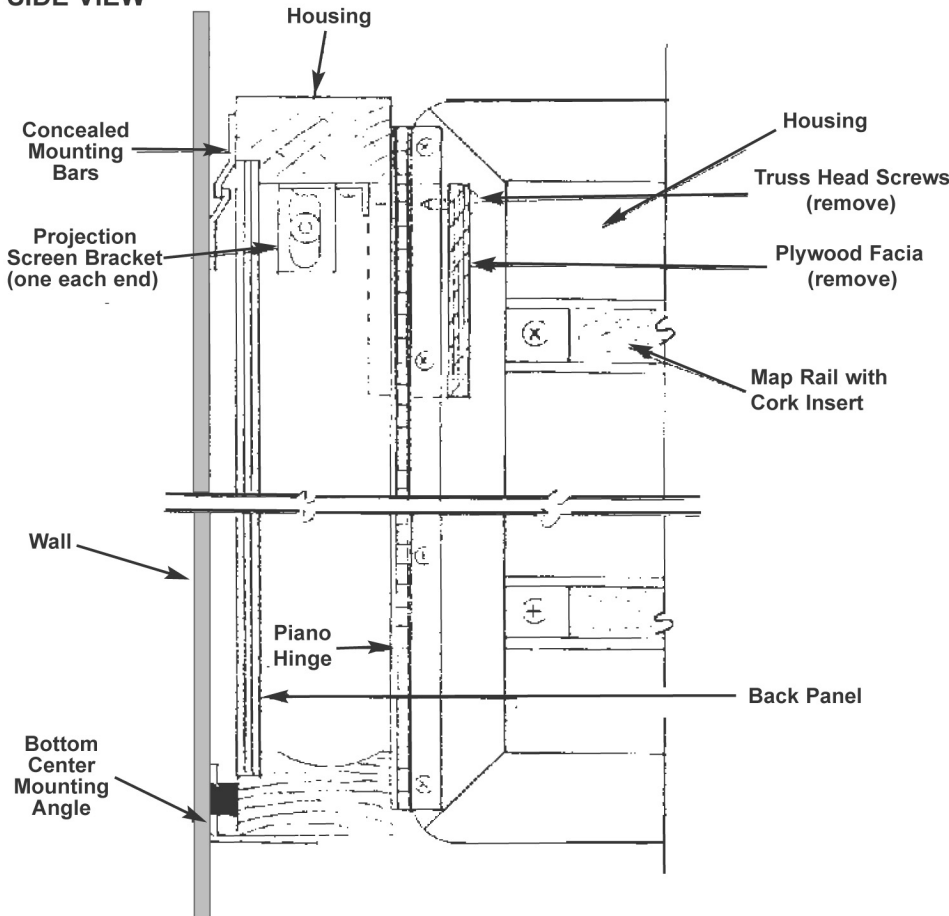
Magnetic Accessories

Wood Cabinet Projection Screen Installation

ISOMETRIC VIEW
(with doors open)



SIDE VIEW



Instructions:

1. Remove plywood facia at head of the cabinet by taking out truss head screws.
2. Install the pull-down projection screen in the screen brackets (factory installed) located at each end inside the head housing.*
3. Replace the plywood facia by reversing the procedure in step #1. Screen is ready for use.

* NOTE: If your cabinet requires a 40"x60" model projection screen, it will be necessary to move the brackets to the outer pre-drilled holes. After you have secured brackets, proceed with step #2.

Questions?

Call 800-334-4245 for assistance.

Additional Supplies Part Numbers:

Whiteboard Accessory Kit
90437

Sketch Pads
90480 (4/pkg)

Door Lock
90449